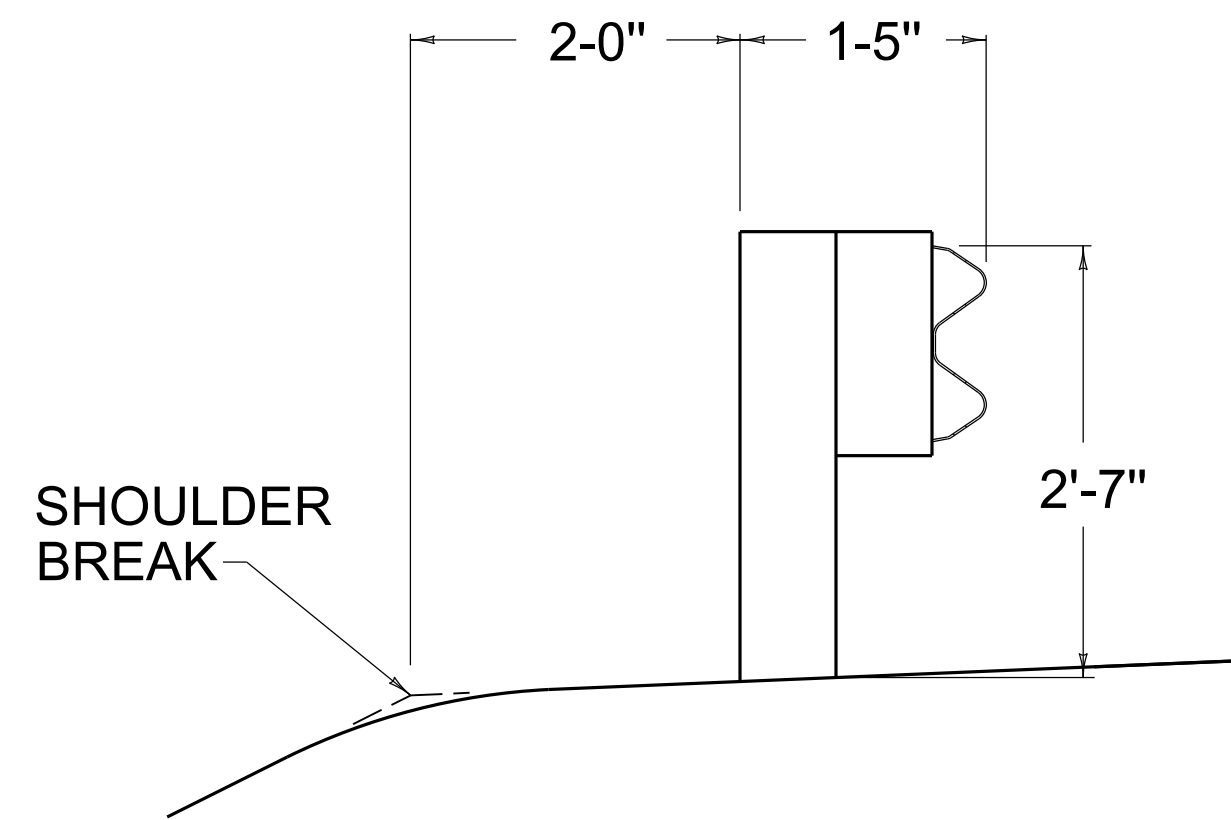


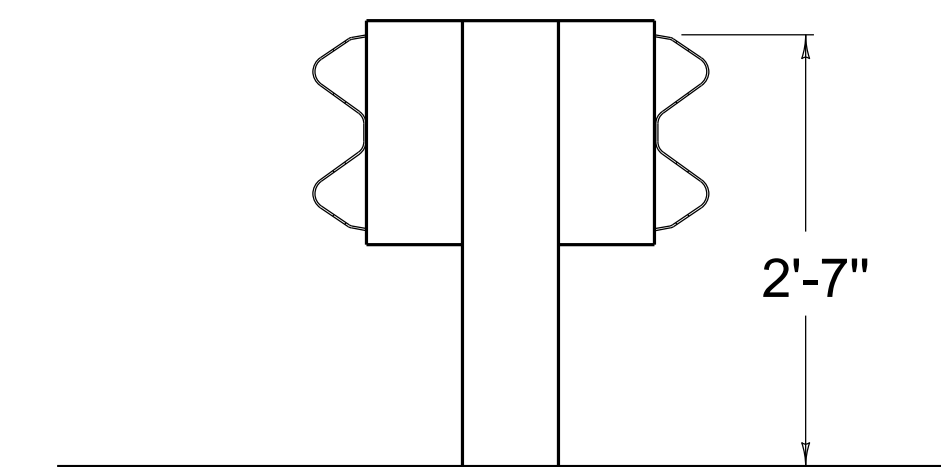
APPROACH ROADS

- ~ NOTES ~
1. FOR END TREATMENT TYPE 4A USE CUR. STD. DWG. RBR-035 FOR OFFSETS.
  2. THE MINIMUM LENGTH OF GUARDRAIL, INCLUDING THE END TREATMENT, PRECEDING A FIXED OBJECT IS 200 FEET: (LENGTH MAY BE REDUCED SHOULD FIELD CONDITIONS WARRANT).

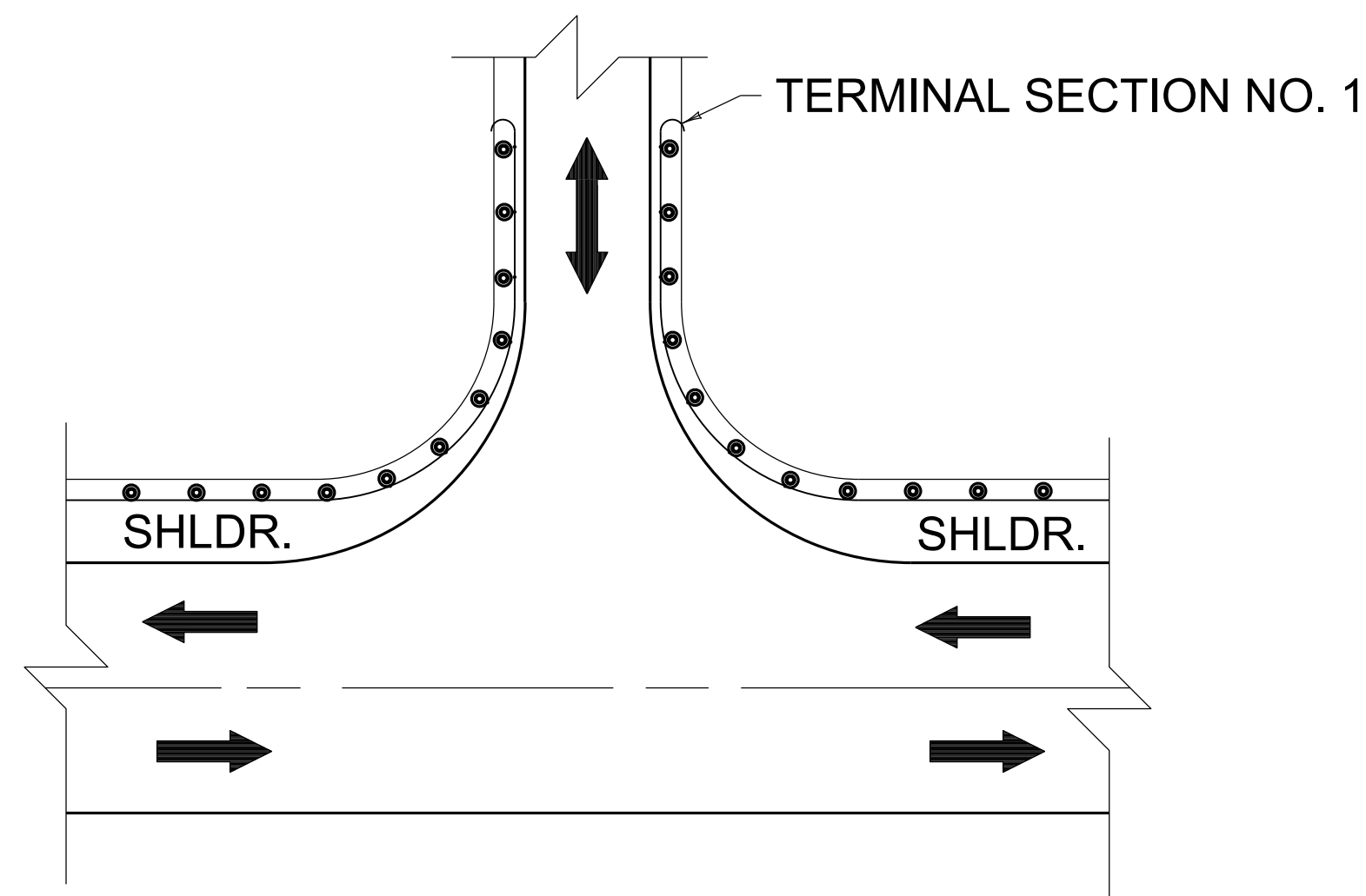
USE WITH CUR. STD. DWG.  
RBI-002 RBR-035



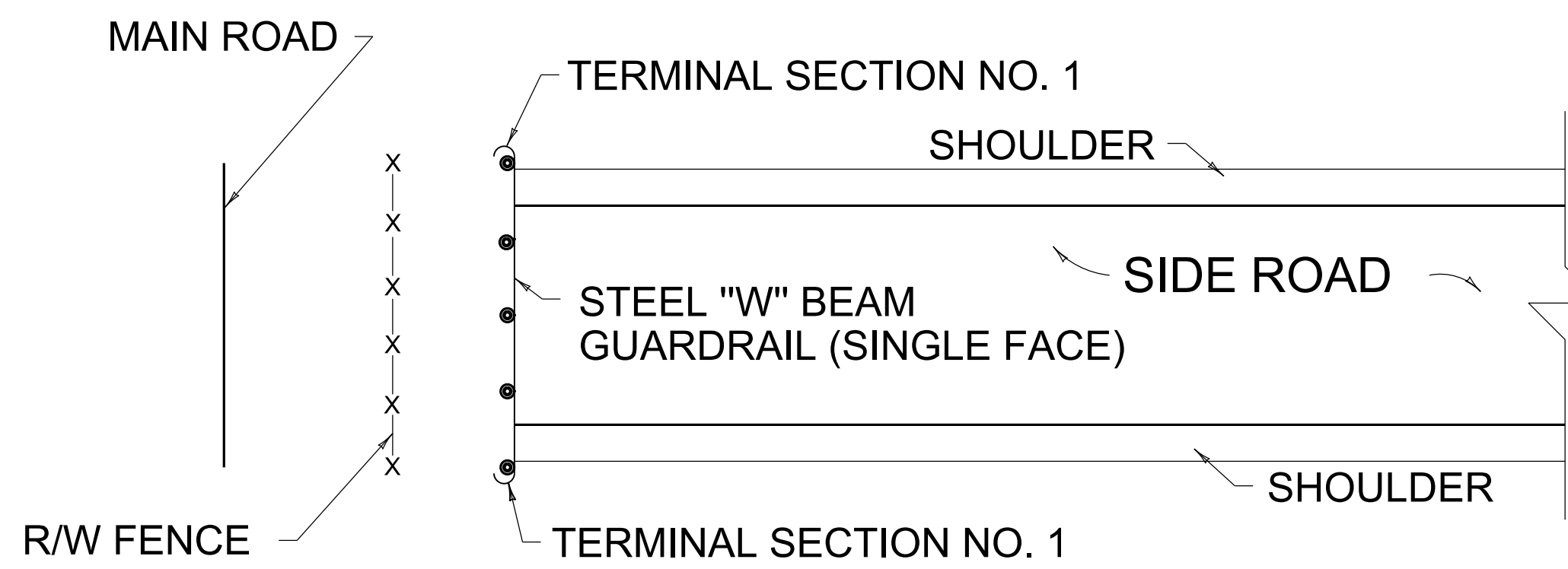
NORMAL GUARDRAIL INSTALLATION



TYPICAL DOUBLE FACE  
GUARDRAIL INSTALLATION



ENTRANCES



GUARDRAIL USED AS A BARRICADE

REVISION DATE: 02/26/2020  
REVISION NUMBER: 0

SUBMITTED 02-26-2020 DATE  
DIVISION DIRECTOR  
APPROVED 02-26-2020 DATE  
STATE HIGHWAY ENGINEER

BARRIERS



COMMONWEALTH OF KENTUCKY  
DEPARTMENT OF HIGHWAYS



GUARDRAIL

TYPICAL INSTALLATIONS

STANDARD DRAWING NUMBER  
RBI-001-12